



Online Labor Market Information Training

Helping Educators Connect with Today's Labor Market

What is Labor Market Information (LMI)?

Labor market information is a rich data source that contains statistics on hundreds of occupations, including annual job openings, median wages, growth rates, level of education, and more. LMI is particularly useful in identifying careers that are projected to be in-demand within various occupational areas and geographic locations. For educational institutions, the ability to identify high-value jobs is essential in ensuring educational goals and strategies are aligned with current labor market needs.



Benefits of LMI for Educators

Educators can use LMI to:

- Make informed decisions about course offerings and programs that best support employment success for students.
- Center curriculum development around destinations for learning that include employment success.
- Encourage teaching in context with career-relevant applications of concepts that are aligned with high-value occupations.
- Inform school counselors of local career opportunities to facilitate the development of more effective career plans for students.
- Strengthen reports and grant writing efforts with data that accurately reflects the educational and employment needs of communities.

Common Challenges and Simple Solutions

Because the use LMI within the field of education is a relatively new idea, it can be challenging to see exactly how this information can be applied to policy and practice, especially at the local level. LMI training experiences may be particularly valuable. These experiences can focus on methods for using annual openings, median wages, growth rates, and related information to identify top career clusters, pathways, and occupations in local communities. Once identified, processes for review can be initiated to determine the degree to which local education practices support employment success for students in local careers. Plans can then be developed and processes implemented to maintain, revise, or create programs to more effectively support local employment success for students.



Pathway2Careers Professional Development

Pathway2Careers helps connect educators to the power of labor market information with comprehensive training and professional development experiences. These learning opportunities, designed explicitly for educators, focus on presenting basic content and strategies for use of LMI in educational practices. P2C is committed to providing clear and engaging instructional materials that significantly enhance the use of education-focused LMI in local communities.

Labor Market Exploration for Educators (Online Training)

The P2C Labor Market Exploration for Educators is a fully-online training that presents foundational concepts related to the interpretation and use of LMI in educational practices. Training materials concentrate on specific topics within various modules. Each module is approximately one hour in length and includes access to:

Online Video Tutorials – Engaging presentations that introduce LMI concepts and demonstrate use of the P2C system.

Printable Guides – Simple, straightforward guides that outline terms, definitions, and application strategies.

Online Resource Center – Extensive library that includes templates, reports, websites, and tools that support the use of LMI in education.

Assessments – Each module concludes with a learning assessment to evaluate topic completion.

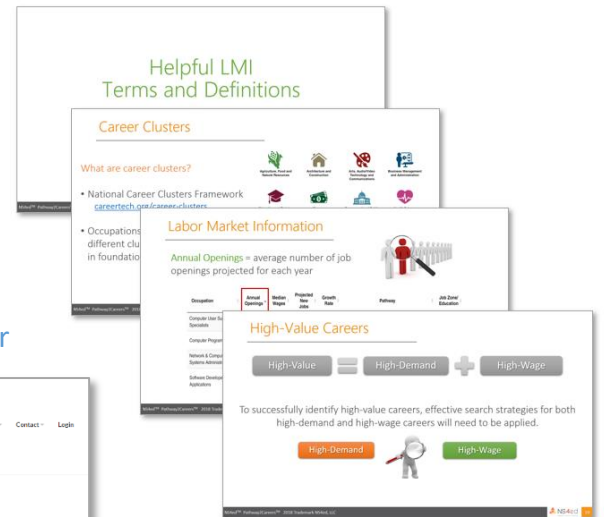
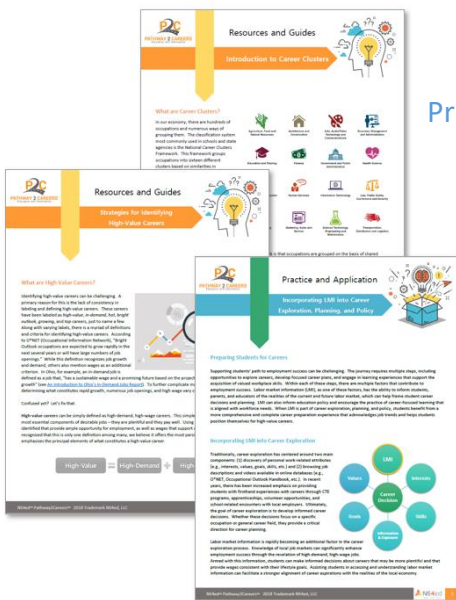
- Module 1**
The Future of Work
- Module 2**
Using LMI to Connect with the Future of Work
- Module 3**
Learning to Use LMI
- Module 4**
Incorporating LMI into Educational Processes

- Rethinking College and Career Readiness
- Preparing Students for Careers
- The Shifting Workforce Landscape
- Problems and Solutions
- Connecting with the Future of Work
- The Power of Awareness to Inform and Prepare
- What is Labor Market Information (LMI)?
- P2C Labor Market Exploration System
- Staying Connected to Work
- Basic Terms and Definitions
- Identifying High-Value Careers
- Exploring LMI Using the P2C System
- Career Exploration
- Career Planning
- Policy and Practice
- Resources and Tools

Online Video Tutorials

Printable Guides

Online Resource Center



Learn more at pathway2pd.com